

K 100 (W) CLO2

Measuring and control instrument for chlorine dioxide

- Easy and safe operation by plain text menu guidance
- Safety by password function



applications



Drinking Water / Beverages



Disinfection



Waste Water Treatment

description

The K 100 (W) CLO2 is a sophisticated single-channel instrument for measuring and control chlorine dioxide. Additionally temperature measurement of the measuring media is possible. The instrument is available in a panel mounted housing (K100 CLO2) and in a wall mounted housing (K 100 W CLO2).

particular characteristics

- 2 limit values with delay, assigned to alarm relay
- 2 separate PI-controllers
- Dosage check
- Background illuminated two-line LC-Display for measured value and temperature
- Serial interface RS 485 optional
- Scaleable, galvanically isolated 0/4 .. 20 mA output
- Display of relay status and error messages
- Invertible alarm output, permanent or pulse contact



K 100 (W) CLO2

Measuring and control instrument for chlorine dioxide

technical data

measuring parameter

Chlorine Dioxide 0.0 .. 4.00 mg/l

input characteristics

temperature measuring range -30 .. +140 °C

output characteristics

output signal 0/4 .. 20 mA (scaleable, galvanically isolated)
load max. 500 Ohm
registration range free scaleable within the measuring range
serial interface RS 485 (optional)
Baud rate 9600
data format 8 bit

power supply

line voltage 24 / 117/ 230 VAC, +6/-10%, 40 .. 60 Hz
power consumption 10 VA

ambient conditions

ambient temperature Operation 0 .. +50 °C, storage -20 .. +65°C
relative humidity max. 90% rH at 40°C (non-condensing)
protection class

panel mounted housing IP 54 (front), IP 30 (housing)
wall mounted housing IP 65

controller

control response on/off controller (adjustable hysteresis)
P/PI controller (pulse-pause, pulse-frequency or continuous output)
relays 2 relays, each with a potential-free NO contact, max. 250V, 6 A, 550 VA
1 alarmrelay with potential-free CO/NO contact, max. 250V, 6A, 550 VA
onset delay 0 .. 200 sec till controller active
digital input Controller stop via external contact

certificates and approvals

CE-symbol Declaration of conformity: The product meets the requirements of the harmonized European standards. It thus complies with the legal requirements of the EC directives.
The manufacturer confirms successful testing of the product by affixing the CE symbol.

mechanical construction - panel mounted housing

material Noryl
dimensions 90x90x116 mm
installation dimensions 92x92x140 mm
weight 0.75 kg
connection push-screw terminals

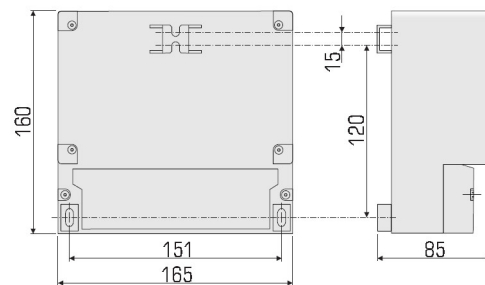
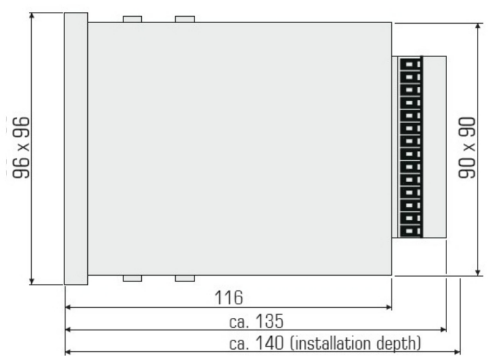


K 100 (W) CLO2

Measuring and control instrument for chlorine dioxide

mechanical construction - wall mounted housing

material	ABS
dimensions	165x160x85 mm
weight	0.95 kg
connection	Spring-loaded terminals



K 100 (W) CLO2

Measuring and control instrument for chlorine dioxide

accessories

accessories

CHECKIT Comparator

The CHECKIT Comparator is a compact handy colorimeter unit which is suitable for both mobile and static analysis work. CHECKIT Comparator is a colorimetric rapid test for easy determination of Free Chlorine, Total Chlorine, Chlorine Dioxide or Ozone concentrations that can be used as an indication measurement for our amperometric measuring systems. Naturally, regarding resolution and accuracy, the rapid test does not come close to the Krypton systems, and it cannot replace a photometric measurement. However, it provides a quick orientation and can therefore prove helpful during installation or routine comparison. The CHECKIT Comparator comes in a robust plastic casing with all necessary equipment.

PKV 30-DPS

Converter for PROFIBUS-DP for max. 32 instruments of the K 100 oder dialog series. Converting of RS 485 to PROFIBUS-DP interface, instrument in a housing for installation on a top hat rail, dimension 105 X 105 x 80 mm (HxBxT), connection cable inclusive

S-341 data logger

The bus data logger S-341 on the base of the RS-485 with Kuntze protocol reads, shows, and stores measuring data of up to 10 Kuntze instruments with up to 8 parameters each.

